

Not only is our catalog a bricolage (with data from all manner of sources), the act of building the catalog today is itself bricolage, using a variety of tools and strategies.

Today I am going to talk about some of the more useful catalog bricolage techniques that we have developed in my time at UNC-Chapel Hill.

A map

A bit of context – my institution and my role in it

My favorite load table – gathering bib records

Extended example of “data bricolage” for
cleaning/enhancing bib records

Script to verify full text access to ebooks

Script/program to summarize data
exported from Millennium

So, being more or less well-versed in all of those tools, and some more that I’ve either forgotten or neglected to mention, I’ve fallen into another role in my organization---helping with different types of problems throughout the organization.

The workflows and solutions I’ll talk about today have come out of these special situations as well as my “official” work.

"It's complicated..."

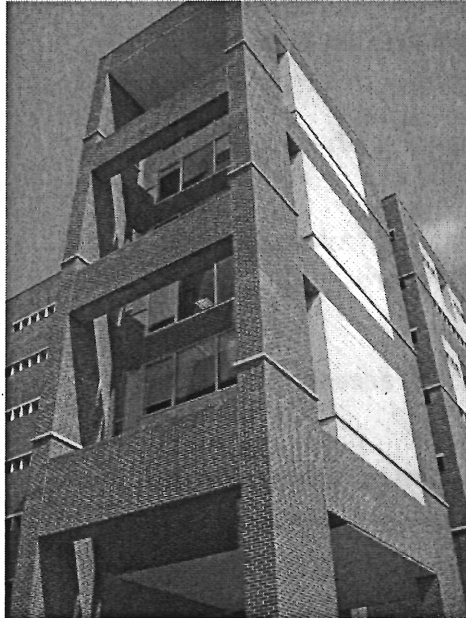


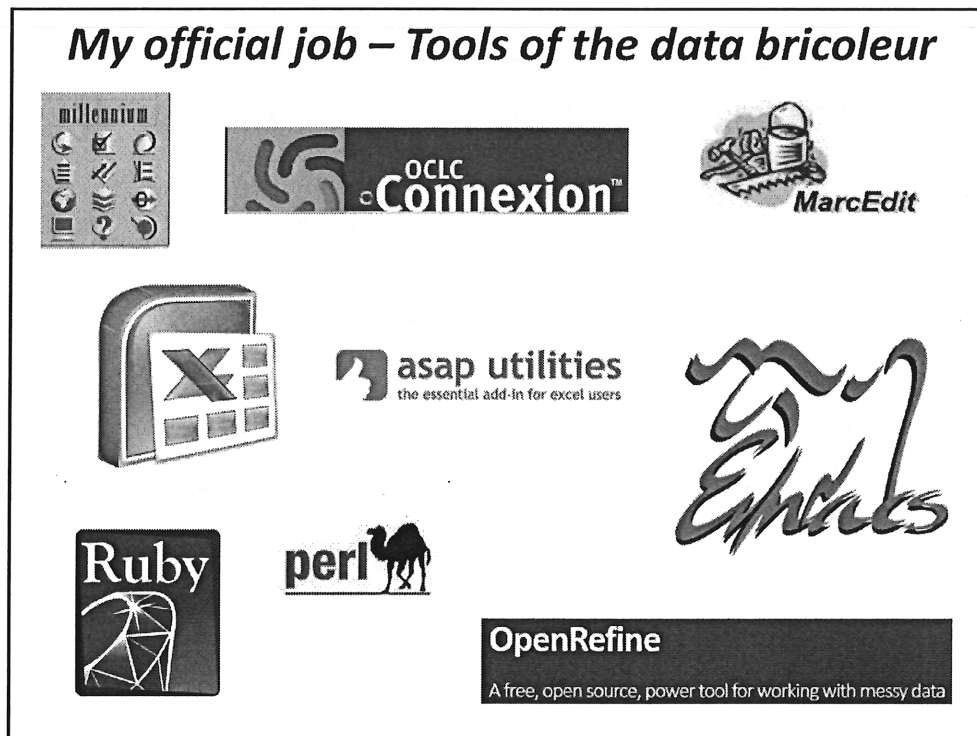
Photo of Davis Library @ UNC by [benuski](#)

- University of NC @ Chapel Hill
- Large institution, ARL member
- 5,901,878 catalog results (not exactly what's in our III backend, but gives an idea of scale)
- 3 administrative units
- +/- 30 branches and specialized collection locations
- >1060 item locations
- Part of Triangle Research Libraries Network, sharing:
 - Endeca OPAC
 - Physical storage space
 - Some MARC records
 - Some acquisitions
- 1 staff member with load table training

My official job – E-resources cataloger

- Managing & loading batches of MARC records for ebooks
- Individual cataloging of Web sites, online databases, and some ebooks
- Oversee maintenance of URLs in catalog records
- (new!) Extraction of our catalog data from Millennium for use in our Endeca OPAC

I have been at UNC Libraries since January 2010, in my current position, and I am still learning how all the local pieces work together.



The usual and expected suspects: Millennium and OCLC Connexion need no further explanation.

The free MarcEdit application, by Terry Reese, is of course indispensable for anyone working with batches of MARC records.

Microsoft Excel, while not typically thought of as a cataloging tool, is where I spend much of my time.

- Data from Millennium Create Lists is analyzed and worked on from Excel.
- Combining data from multiple sources, simple duplicate identification, title list and MARC record reconciliation, etc.
- MarcEdit outputs data to Excel and allows you to create MARC records from Excel.
- Spreadsheets serve as the input files and output formats of most of the scripts I write

ASAP Utilities (Libraries qualify for the free edition) makes a life lived in Excel go much more easily.

Emacs is technically a text editor (in the sense that the Incredible Hulk is a strong man), but it can be used for much more than that. For cataloging, I mainly use it to search and manipulate MarcEdit Mnemonic Text files in ways MarcEdit won't let me do.

Ruby is my go-to scripting language, and I'm now using Perl for our catalog data extraction scripts.

OpenRefine (was Google Refine) is something I've used less often, to clean up and transform really messy data. The situations in which it's useful are more rare for me, but it has been a lifesaver when I needed it.

(All of the images are links, if you want to find out more about any of these tools.)

My unofficial job – “Fixer”

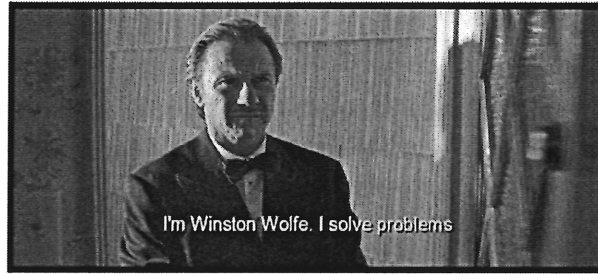


Image from [QuotesPics.com](https://www.QuotesPics.com)

So, HathiTrust requires very specific info in their metadata for an ingest...

This branch library has an old Access database of items they want to put in the catalog...

Oops, a lot titles in that big ebook package we just cancelled were on EReserve. How can we identify them?

We need a way to easily work with payment data outside Millennium for a serials review!

So, being more or less well-versed in all of those tools, and some more that I've either forgotten or neglected to mention, I've fallen into another role in my organization---helping with different types of problems throughout the organization.

The workflows and solutions I'll talk about today have come out of these special situations as well as my “official” work.

gathering, cleaning, & enhancing records

MY FAVORITE LOAD TABLE

BACKGROUND: a pre-existing workflow

Spreadsheet from Internet Archive Scribe manager:

IDENTIFIER	TITLE	CALL NUMBER	VOLUME	DETAILS
hespokenowthey	He spoke, now they speak	b2058719		https://archive.org/details/hespokenowtheysp00yate
agriculturaladdr0	Agricultural address of Col	b2409093		https://archive.org/details/agriculturaladdr00cann
extractsfromorig	Extracts from original letter	b2564550		https://archive.org/details/extractsfromorig00dowl
soulcitynorthcar0	Soul City North Carolina	b2709614		https://archive.org/details/soulcitynorthcar00soul

Spreadsheet >> MarcEdit Delimited Text Translator:

```
=LDR 00000nam 2200000la 45e0
=530 \\\$aAlso available via the World Wide Web.
=856 41$yFull text available via the UNC-Chapel Hill Libraries$uhttp://archive.org/details/hespokenowtheysp00yate
=907 \\\$a.b2058719a
=949 \1$g1$lebnb$0$mSt11$u-$jOCA electronic book

=LDR 00000nam 2200000la 45e0
=530 \\\$aAlso available via the World Wide Web.
=856 41$yFull text available via the UNC-Chapel Hill Libraries$uhttp://archive.org/details/agriculturaladdr00cann
=907 \\\$a.b2409093a
=949 \1$g1$lebnb$0$mSt11$u-$jOCA electronic book
```

Years ago, UNC became home to multiple Internet Archive Scribe scanning machines and began contributing digitized works to Internet Archive as part of the Open Content Alliance.

Hundreds, and sometimes over a thousand items scanned each month. Our public services staff believed the print bib record for each title scanned should contain a link to the digitized version online.

Thankfully, the Scribe manager was able to provide technical services with a spreadsheet associating a bnum with each digitized item and its URL.

MarcEdit's Delimited Text Translator function was used to turn that spreadsheet into "stub" MARC records.

BACKGROUND: A pre-existing workflow

```
=LDR 00000nam 2200000la 45e0
=530 \\\$aAlso available via the World Wide Web.
=856 41$yFull text available via the UNC-Chapel Hill Libraries$uhttp://archive.org/details/hespokenowtheysp00yate
=907 \\\$a.b2058719a
=949 \1$g1$lebnb$h0$m$t11$u-$jOCA electronic book

=LDR 00000nam 2200000la 45e0
=530 \\\$aAlso available via the World Wide Web.
=856 41$yFull text available via the UNC-Chapel Hill Libraries$uhttp://archive.org/details/agriculturaladdr00cann
=907 \\\$a.b2409093a
=949 \1$g1$lebnb$h0$m$t11$u-$jOCA electronic book
```

Compiled to .mrc and loaded with locally-created load table that:

- Matches on bnum (907) for overlay
- Protects ALL fields in existing record (LDR, Cat Date, etc... everything)
- Inserts any fields from the new stub record (will create dupe fields)
- Creates new item

The stub MARC records were loaded using a locally-created load table with the above qualities.

This resulted in an efficient workflow for adding URLs to many hundreds of bibliographic records each month.

Why am I telling you about this old thing?

"How can I get these back into a review file?"

b29786551
b30718326
b31024907
b31024932
b31351463
b32383137
b32568149
b32594124
b32874492
b32921342
b32935602
b33764037

...

**"You can't,
really."**



I didn't work in my position very long before I went to a colleague with that common question: how do I create a review file from a list of bnums?

The answer was, of course, "That's not a supported function."

...

I've since learned of some other workarounds for this using Expect scripts and so on, but here is what dawned on me the next time I processed a batch of the Internet Archive/OCA records...

**What if I loaded stub records
containing nothing but the
bnum?**

```
=LDR 00000nam 2200000la 45e0  
=907 \\$a.b29786551  
  
=LDR 00000nam 2200000la 45e0  
=907 \\$a.b30718326  
  
=LDR 00000nam 2200000la 45e0  
=907 \\$a.b31024907  
  
=LDR 00000nam 2200000la 45e0  
=907 \\$a.b31024932  
  
=LDR 00000nam 2200000la 45e0  
=907 \\$a.b32383137  
  
=LDR 00000nam 2200000la 45e0  
=907 \\$a.b32594124
```

- On load, check “Use Review Files” box
- It works!
- We toggle item creation in the load table as needed (trivial tweak)

(me) ↓



After I began thinking outside the established workflow for this particular load table, we began using it for all kinds of things. The next section of my talk illustrates another use.

I understand that not all III libraries have the ability or desire to create and edit their own load tables. But I have wondered if there is some generalized version of this load table that III could make available in order to allow much greater flexibility in gathering, correcting, and enhancing records in our catalogs.

cleaning & maintaining catalog records

THE SAVINE SAGA

Russia Beyond Russia

The André Savine Digital Library

[Home](#)
[Browse](#)
[Search](#)
[About](#)

Language: [English](#) [Русский](#) [Transliterate](#) [On/Off](#)

Browse

- Title
- Creators
- Topical Subjects
- Geographical Subjects
- Contributors
- Contributor Occupations
- Organizations
- Series
- Publishers
- Publication Date
- Publication Location

Search

[Advanced Search](#)

"Оборончество" или "Пораженчество" ?

By Левченко, М.

Savine Annotations: Документальные материалы по: разработке трагической, острой для эмигранта проблемы: что делать эмигранту, если вспыхнет война в России? придется бороться с интригами и клеветами, а чем это тогда будет стоить для Русского эмигранта. Разработка основ: и программы "Оборонцев". Русские политические партии: зарубежом. Документальные материалы. Бумажная обложка. Редкость.

Savine Citations: [6 с.]

Topical Subjects: Русская история, Русские политические партии в зарубежье

Geographical Subjects: Россия

Contributor Occupations: Эмигрант

Organizations: Оборонцы (партия)

Format: book

Physical Description: 8 стр.

Publishers: [5 и.]

Publication Date: 1936

Publication Location: Париж

OCLC Numbers: 38770758

Find this at UNC University Libraries

[UNC Libraries Home](#)
[UNC Home](#)
[Terms and Conditions](#)
[Help](#)

André Savine was the owner of an antiquarian bookstore in Paris specializing in materials relating to the Russian Diaspora. In 2002, UNC acquired the André Savine collection, which includes the stock of the bookstore and Savine's extensive private collection dealing with Russian emigration.

In 2008, the "Russia Beyond Russia Core Module" database of Savine's extensive bibliographic research--thousands of index cards and notebook pages--was completed.

MARC Leader #####cam 22#####a \$500		Local Millennium Record	
LOCATIONS tr .w.c			
Bib Utility No.	001	6473232	
Misc.	003	OCOLC	
Misc.	005	20091130121709.0	
Misc.	008	800701s1823 gw 000 0brusr	
LCCN	010	37831303	
Misc.	035	(OCOLC)6473232	
Misc.	040	DLCjFHMjdFHMjdOCLjdOCLCQjdOCLCQ	
Misc.	043	e-u---	
Misc.	049	RBCS	
Misc.	050	4 PO3351j0.M5	
Misc.	066	ic(N	
Author	100	1 [6880-01]aM"akotin, V. A.[q(Venedikt Aleksandrovich)].d1867-1937.	
Title	245	1 0 [6880-02]aA.S. Pushkin i dekabristy /icV.A. M"akotin.	
Publication info.	260	1 [6880-03]aBerlin :bVataga :jaPraga :jbPlam"ta,ic1923[e(Berlin :jbTip. Kummer i Ko)	
Description	300	89, [1] p. :c20 cm.	
Note	500	On p. [4] of cover: Izdanie "Vataga" i "Plam"ta", Berlin, Praga.	
Note	500	Emigre Books & Journals - History Philosophy Theology (S15)	
LC Subject	600	1 0 [68	Мякотин, В. А.
LC Subject	651	0 Ru	
Added Author	710	2 And	М"akotin, V. A. *q (Venedikt Aleksandrovich). *d 1867-1937.
Misc.	856	4 2 [3R	
		htu	245 1 0 A.C. Пушкин и декабристы / *c В.А. Мякотин.
Misc.	880	1 [61	245 1 0 A. S. Pushkin i dekabristy.
Misc.	880	1 0 [62	
Misc.	880	[62	260 Берлин : *b Ватара ; *a Прага : *b Пламя, *c 1923 *e (Berlin : *b Тип. Куммер и Ко)
Misc.	880	1 0 [66	260 Berlin *b [Типография" Kummer i ko] *c 1923.
DRA No.	935	AC	
Misc.	907	.b1	300 89, [1] p. *c 19 1/2 cm.
			500 In Cyrillic characters.
			500 At head of title: V. A. M"akotin.
			500 On p. [4] of cover: Izdanie "Vataga" i "Plam"ta", Berlin, Praga.
			600 1 0 Пушкин, Александр Сергеевич. *d 1799-1837.
			600 1 0 Pushkin, Aleksandr Sergeevich. *d 1799-1837.
			651 0 Russia *x History *y December Uprising, 1825.
			856 4 2 *3 Related electronic resource: Russia Beyond Russia Core Module (RBR-CM) based on André Savine's research *u http://br.lib.unc.edu/80/cm/card.html?source_id=05378
OCLC Master Record			

Where the Core Module database entries described materials held by UNC, a link to the database entry was included in the catalog record. These links were also added to the corresponding master records in OCLC WorldCat.

+3600 local records

+3600 OCLC records

http://rbr.lib.unc.edu/cm/card.html?source_id=00664

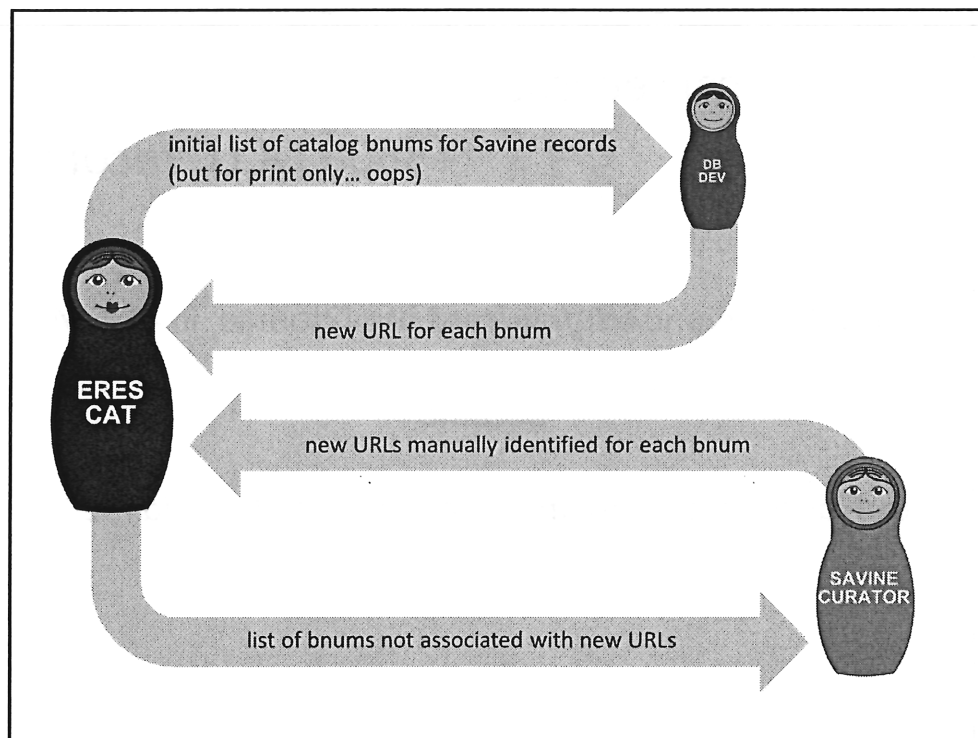
became

<http://dc.lib.unc.edu/cdm/item/collection/rbr/?id=32017>

These links were added to over 3000 records.

And then in 2012, the Core Module database was redesigned and became the Savine Digital Library.

All the database entry URLs changed.



Luckily, this was not completely news to me. A couple of months earlier, the new database developer had requested a list of bnums of Savine collection items. At the time, providing him with two bnums per title (records for print and digitized) sounded like it would be problematic, so I only provided print bnums.

The developer provided me with a spreadsheet of all the bnums I'd provided and the new URL for each. It was then that I realized the folly in not sending him e-bnums.

Luckily, Excel came to the rescue, as I'll show in the next slide.

For the items that I could not match up with a new URL, the Curator of the Savine Collection provided the new URL, and I merged that into my spreadsheet.

Local Record Strategy

- Create review file of all bib records with 856 matching old db URL
- Export data from Millennium/open in Excel... (table name = mill)

bnum	oclcnum	blvl	MAT T	856 u
b10786181	295324	m	print	http://rbr.lib.unc.edu/cm/card.html?source_id=03642
b10803312	302595	m	print	http://rbr.lib.unc.edu/cm/card.html?source_id=00854
b10826944	312034	m	print	http://rbr.lib.unc.edu/cm/card.html?source_id=00982
b10863497	326011	m	print	http://rbr.lib.unc.edu/cm/card.html?source_id=04588
b10983430	367020	m	print	http://rbr.lib.unc.edu/cm/card.html?source_id=03384
b10999103	372388	m	print	http://rbr.lib.unc.edu/cm/card.html?source_id=00606
b11005890	22261636	m	print	http://rbr.lib.unc.edu/cm/card.html?source_id=05363

- New worksheet w/new DB info (table name = contdm)

catalog_id	url
b1080331	http://dc.lib.unc.edu/cdm/item/collection/rbr/?id=31495
b1082694	http://dc.lib.unc.edu/cdm/item/collection/rbr/?id=19923
b1086349	http://dc.lib.unc.edu/cdm/item/collection/rbr/?id=18694
b1098343	http://dc.lib.unc.edu/cdm/item/collection/rbr/?id=21187
b1099910	http://dc.lib.unc.edu/cdm/item/collection/rbr/?id=21873
b1100589	http://dc.lib.unc.edu/cdm/item/collection/rbr/?id=17388
b1102608	http://dc.lib.unc.edu/cdm/item/collection/rbr/?id=28027
b1127652	http://dc.lib.unc.edu/cdm/item/collection/rbr/?id=23409

Hmm... these
bnums won't
match...

Local Record Strategy

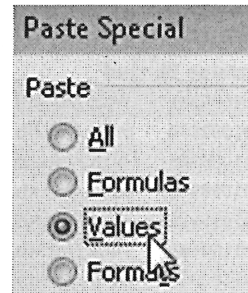
- Add 8-character bnum to mill table

bnum	bnum8
b10786181	=left(a2,8)
b10803312	
b10826944	+
b10863497	



bnum	bnum8
b10786181	b1078618
b10803312	b1080331
b10826944	b1082694
b10863497	b1086349

- Copy entire bnum8 column
- "Paste special > Values" back in the same place



Local Record Strategy

- VLOOKUP formula to grab new URLs from contdm table
mill table (some columns hidden)

A	B	G
bnum	bnum8	NEW URL
b10786181	b1078618	#N/A
b10803312	b1080331	http://dc.lib.unc.edu/cdm/item/collection/rbr/?id=31495
b10826944	b1082694	http://dc.lib.unc.edu/cdm/item/collection/rbr/?id=19923

contdm table

A	B
catalog_id	url
b1080331	http://dc.lib.unc.edu/cdm/item/collection/rbr/?id=31495
b1082694	http://dc.lib.unc.edu/cdm/item/collection/rbr/?id=19923
b1086349	http://dc.lib.unc.edu/cdm/item/collection/rbr/?id=18694

Local Record Strategy

- Identify pattern in missing new URLs

MATT	856 u	NEW URL
print	http://rbr.lib.unc.edu/cm/card.html?source_id=00019	http://dc.lib.unc.edu/cdm/item/collection/rbr/?id=34559
ebook	http://rbr.lib.unc.edu/cm/card.html?source_id=00019	#N/A
print	http://rbr.lib.unc.edu/cm/card.html?source_id=00020	http://dc.lib.unc.edu/cdm/item/collection/rbr/?id=34638
print	http://rbr.lib.unc.edu/cm/card.html?source_id=00022	http://dc.lib.unc.edu/cdm/item/collection/rbr/?id=31502
print	http://rbr.lib.unc.edu/cm/card.html?source_id=00035	http://dc.lib.unc.edu/cdm/item/collection/rbr/?id=34607
ebook	http://rbr.lib.unc.edu/cm/card.html?source_id=00035	#N/A
print	http://rbr.lib.unc.edu/cm/card.html?source_id=00036	http://dc.lib.unc.edu/cdm/item/collection/rbr/?id=19994

- Create new table (name = urlmatch)

A	B
OLD URL	NEW URL
http://rbr.lib.unc.edu/cm/card.html?source_id=00001	http://dc.lib.unc.edu/cdm/item/collection/rbr/?id=22832
http://rbr.lib.unc.edu/cm/card.html?source_id=00003	http://dc.lib.unc.edu/cdm/item/collection/rbr/?id=23898
http://rbr.lib.unc.edu/cm/card.html?source_id=00004	http://dc.lib.unc.edu/cdm/item/collection/rbr/?id=20896
http://rbr.lib.unc.edu/cm/card.html?source_id=00007	http://dc.lib.unc.edu/cdm/item/collection/rbr/?id=19960

Local Record Strategy

- In mill table, clear out NEW URL column

MATT	856	u	NEW URL
print	http://rbr.lib.unc.edu/cm/card.htm?source_id=00019		http://dc.lib.unc.edu/cdm/item/collection/rbr/?id=34559
ebook	http://rbr.lib.unc.edu/cm/card.htm?source_id=00019		#N/A
print	http://rbr.lib.unc.edu/cm/card.htm?source_id=00020		http://dc.lib.unc.edu/cdm/item/collection/rbr/?id=34638
print	http://rbr.lib.unc.edu/cm/card.htm?source_id=00022		http://dc.lib.unc.edu/cdm/item/collection/rbr/?id=31502
print	http://rbr.lib.unc.edu/cm/card.htm?source_id=00035		http://dc.lib.unc.edu/cdm/item/collection/rbr/?id=34607
ebook	http://rbr.lib.unc.edu/cm/card.htm?source_id=00035		#N/A
print	http://rbr.lib.unc.edu/cm/card.htm?source_id=00036		http://dc.lib.unc.edu/cdm/item/collection/rbr/?id=19394



MATT	856	u	NEW URL
print	http://rbr.lib.unc.edu/cm/card.html?source_id=00019		
ebook	http://rbr.lib.unc.edu/cm/card.html?source_id=00019		
print	http://rbr.lib.unc.edu/cm/card.html?source_id=00020		
print	http://rbr.lib.unc.edu/cm/card.html?source_id=00022		
print	http://rbr.lib.unc.edu/cm/card.html?source_id=00035		
ebook	http://rbr.lib.unc.edu/cm/card.html?source_id=00035		
print	http://rbr.lib.unc.edu/cm/card.html?source_id=00036		

Local Record Strategy

- In mill table, repopulate NEW URL with VLOOKUP from urlmatch

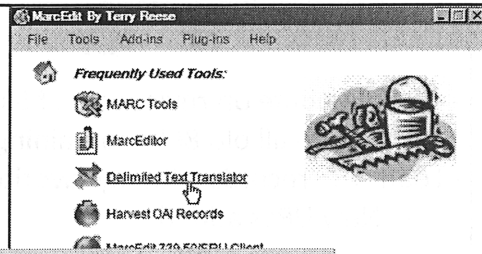
C	D	E
MAT T 856 u		NEW URL
print	http://rbr.lib.unc.edu/cm/card.html?source_id=00019	=VLOOKUP(d2,urlmatch,2,FALSE)
ebook	http://rbr.lib.unc.edu/cm/card.html?source_id=00019	
print	http://rbr.lib.unc.edu/cm/card.html?source_id=00020	
print	http://rbr.lib.unc.edu/cm/card.html?source_id=00022	
print	http://rbr.lib.unc.edu/cm/card.html?source_id=00035	
ebook	http://rbr.lib.unc.edu/cm/card.html?source_id=00035	
print	http://rbr.lib.unc.edu/cm/card.html?source_id=00036	

↓

C	D	E
MAT T 856 u		NEW URL
print	http://rbr.lib.unc.edu/cm/card.html?source_id=00019	http://dc.lib.unc.edu/cdm/item/collection/rbr/?id=34559
ebook	http://rbr.lib.unc.edu/cm/card.html?source_id=00019	http://dc.lib.unc.edu/cdm/item/collection/rbr/?id=34559
print	http://rbr.lib.unc.edu/cm/card.html?source_id=00020	http://dc.lib.unc.edu/cdm/item/collection/rbr/?id=34638
print	http://rbr.lib.unc.edu/cm/card.html?source_id=00022	http://dc.lib.unc.edu/cdm/item/collection/rbr/?id=31502
print	http://rbr.lib.unc.edu/cm/card.html?source_id=00035	http://dc.lib.unc.edu/cdm/item/collection/rbr/?id=34607
ebook	http://rbr.lib.unc.edu/cm/card.html?source_id=00035	http://dc.lib.unc.edu/cdm/item/collection/rbr/?id=34607
print	http://rbr.lib.unc.edu/cm/card.html?source_id=00036	http://dc.lib.unc.edu/cdm/item/collection/rbr/?id=19394

Local Record Strategy

- Use MarcEdit Delimited Text Translator to create "stub records"



A	E
bnum	NEW URL
b18307097	http://dc.lib.unc.edu/cdm/item/collection/rbr/?id=34559
b60224307	http://dc.lib.unc.edu/cdm/item/collection/rbr/?id=34559
b57385762	http://dc.lib.unc.edu/cdm/item/collection/rbr/?id=34638
b40325805	http://dc.lib.unc.edu/cdm/item/collection/rbr/?id=31502
b57474412	http://dc.lib.unc.edu/cdm/item/collection/rbr/?id=34607
b60285126	http://dc.lib.unc.edu/cdm/item/collection/rbr/?id=34607

```

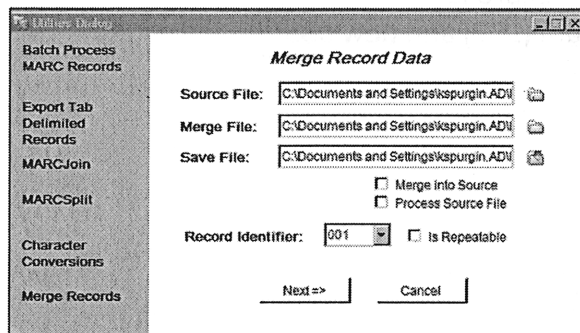
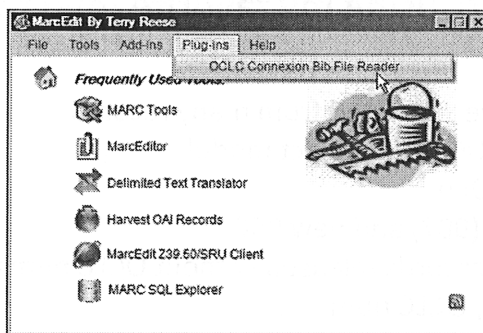
=LDR 00000nam 2200000la 45e0
-856 42$3More information about this item in: Russia Beyond Russia: The André Savine Digital Library$uhttp://dc.lib.unc.edu/cdm/item/collection/rbr/?id=14930
-907 \1$a.b6121603x

=LDR 00000nam 2200000la 45e0
-856 42$3More information about this item in: Russia Beyond Russia: The André Savine Digital Library$uhttp://dc.lib.unc.edu/cdm/item/collection/rbr/?id=14935
-907 \1$a.b66518672

=LDR 00000nam 2200000la 45e0
-856 42$3More information about this item in: Russia Beyond Russia: The André Savine Digital Library$uhttp://dc.lib.unc.edu/cdm/item/collection/rbr/?id=14942
-907 \1$a.b57782556
  
```

Local Record Strategy

- Global update on review file of Savine records
 - Delete all old 865s containing |uhttp://rbr.lib.unc.edu
- Load stub records with my favorite load table
 - New URLs added



OCLC Record Strategy

- Batch search OCLC#s into local OCLC save file
- Validate/correct as necessary
- Use MARCedit/OCLC plugin to open local save file in MARCedit
- Copy all to new MARCedit file
- Delete old URLs, Save
- Merge in new URLs from "stub" record file created w/OCLC# and new URLs
- Copy merged records back into file created by plugin
- Save records from plugin MARCedit file back to local OCLC save file
- Batch replace records in OCLC Connexion

* MARCedit/OCLC plugin only works on 32-bit Windows installations.

Other bricolage projects using my favorite load table

- SpringerLink ebook records
 - 950s (subject module) were deleted from many records
 - In SpringerLink title list: DOI url, Subject module
 - In Millennium: bnum, DOI url
 - Stub records with bnum (907) and new 950
- Alexander Street Press (ASP) records released without OCLC nums
 - From ASP: ASP record ID, OCLC num
 - From Mill: bnum, ASP record ID
 - Stub records with bnum (907) and new 035

A script to verify full-text access to ebooks

BEYOND THE URL CHECKER

The previous examples show some ways we've cleaned and enhanced our catalog via data bricolage, moving data out of and back into Millennium.

I'm shifting gears here a bit to talk about tools I've developed to let us work with data exported from Millennium, with a focus on verifying and summarizing data from the ILS---not necessarily having to get the results back into the system.

Access checker:

The problem addressed

- Ideally, vendors would provide us with:
 - MARC records for **ALL** items to which we have full access
 - **NO** MARC record for items to which we have restricted access
- Reality is not ideal.
- Example: SpringerLink e-books
 - 250-560 new MARC records a month

<http://dx.doi.org/10.1007/978-3-540-87631-1>

doi> TM The DOI® System

Error - DOI Not Found

The DOI you requested --

10.1007/978-3-540-87631-1

-- cannot be found in the Handle System.

Possible reasons for the error are:

- the DOI has not been created
- the DOI is cited incorrectly in your source
- the DOI does not resolve due to a system problem

If you believe you have requested a DOI that should be found, you may report this error by filling out the form below:

Missing DOI:

Referring Page:

E-mail address:

Comments:

[DOI Web Site](#)