

Campus Facilities

Planning, Design & Construction



Building A Better Mizzou



Campus Facilities
University of Missouri

MIZZOU



Building Coordinator's Meeting

October 27, 2011

MIZZOU

MU Project Workload Recently Completed

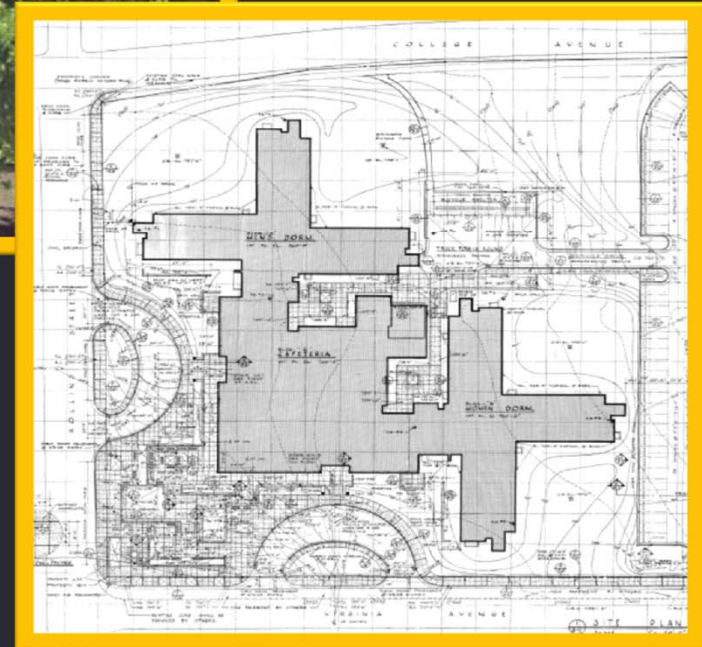
- Student Center
- Rollins Group Renovation
- Tate Hall – Total Interior Renovation
- Switzler Hall – Total Interior Renovation
- Women's & Children's Health Pavilion – 1st Floor Renovation

MIZZOU

MU Project Workload Recently Completed

- Francis Quad Storm Sewer – Regrade/Resod
- Replace Steam & Condensate From Lathrop to Providence Rd.
- Build Steam & Condensate Lines – Monk Dr.
- South Campus Storm Sewer
- Monk Drive Reconstruction (VA Project)

MIZZOU



Rollins Group Renovation
Start: February 2009
Hudson & Rollins Opened Fall 2010
Gillette Completion: June 2011
Budget \$39 Million

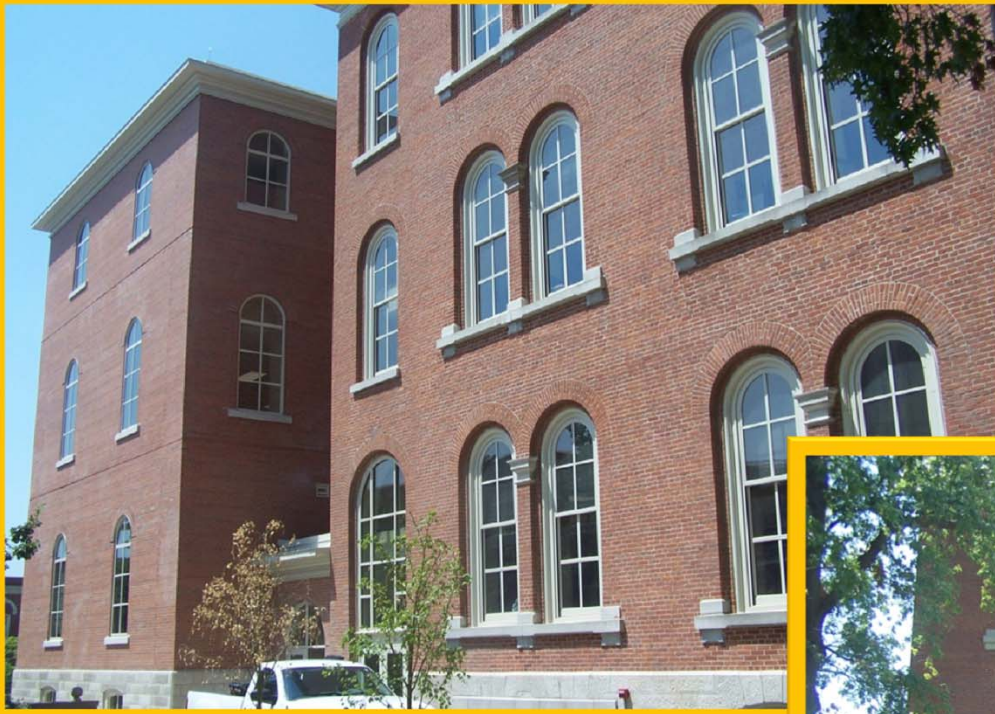
MIZZOU



Tate Hall – Total Interior Renovation
Start: October 2009
Completion: June 2011
Budget: \$8,000,000
CM – at – Risk



MIZZOU



Switzler Hall –
Total Interior Renovation
Start: October 2009
Completion: May 2011
Budget: \$5,200,000
CM – at – Risk



MIZZOU



Jesse Hall Auditorium
Start: October 8, 2010
Completion: August 2011
Budget: \$1.2 million

MIZZOU

Gymnastics/Golden Girls Practice Facility



Gymnastics/Dance Practice Facility

Start: September 2010

Completion: October 2011

Budget \$5,339,000

MIZZOU



Project Workload

Major Projects In Construction

MIZZOU



University Hospital – Patient Care Tower

Four Bid Packages

Completion: December 2012

Budget: \$203 Million

MIZZOU



Power Plant – Combined Heat and Power Upgrade
Chimney Repairs

Start: Mid-September 2010

Completion: Fall 2012

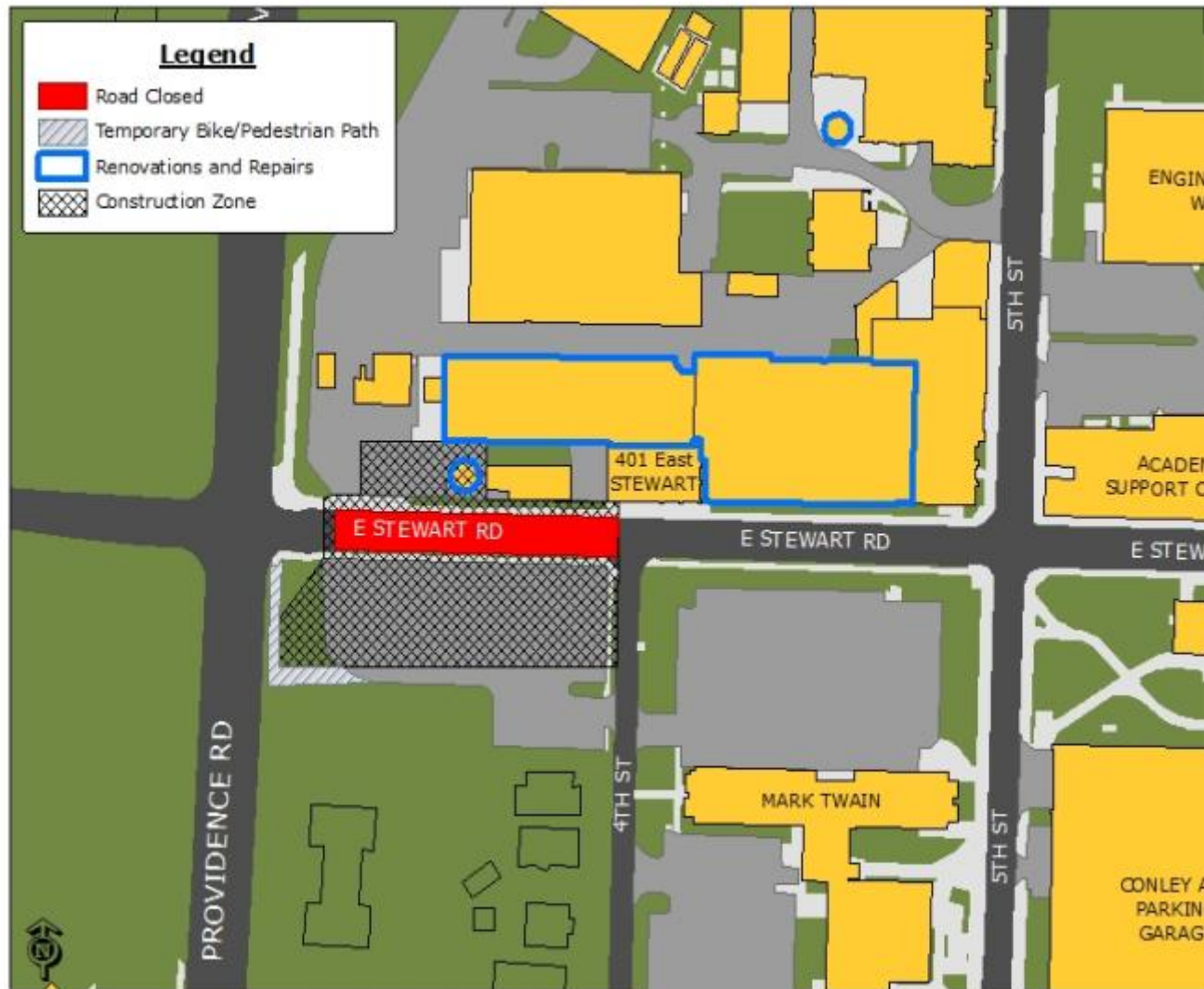
Budget: \$83 Million

CM – at - Risk

MIZZOU



Road Closures 2011: Stewart Rd. Between Providence & 4th St.



Stewart Rd. between
Providence and 4th St.

End: Fall 2012



University Hospital
6th & 7th Floor Renovation
Start: January 2010
Completion: April 2012
Budget: \$15.6 Million
CM-at-Risk



MIZZOU



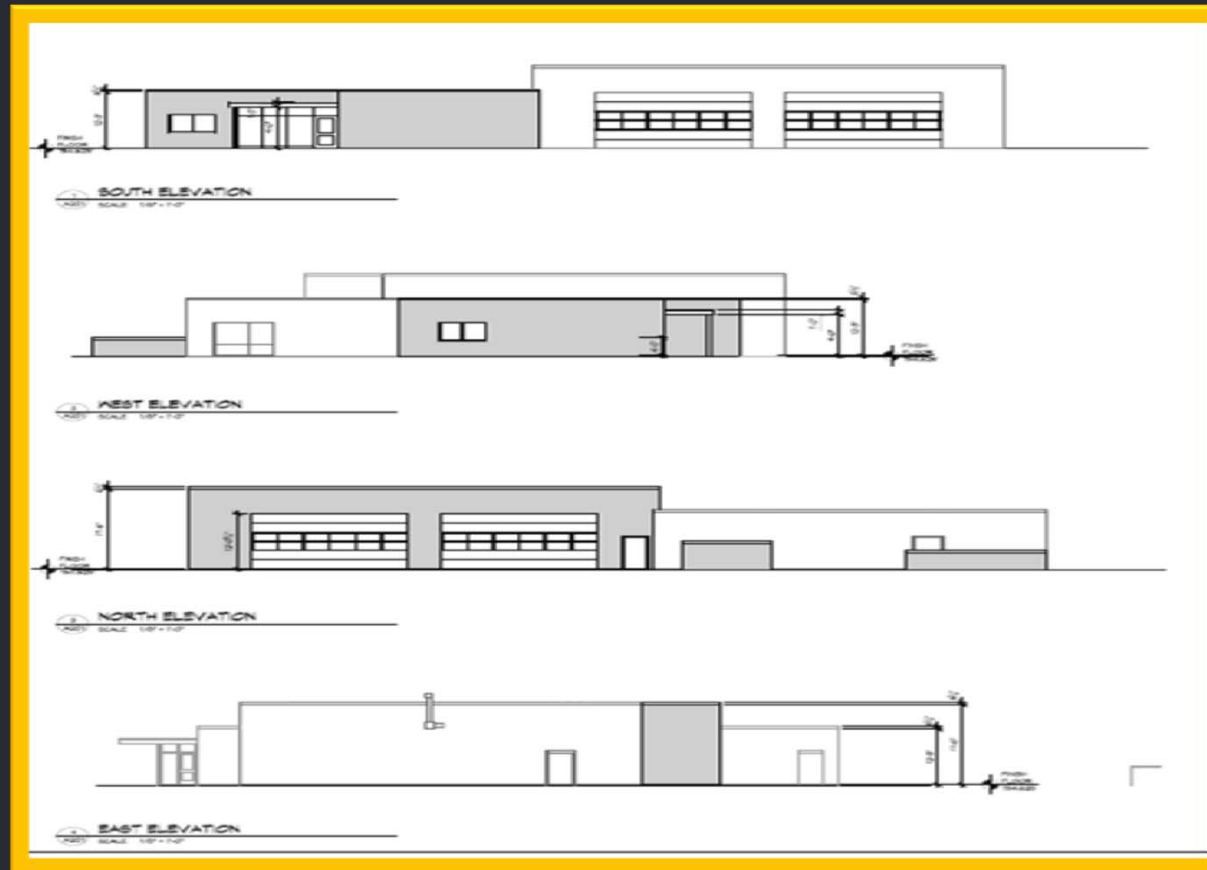
Tennis Courts-Add Outdoor courts

Start: Sept 1, 2011

Completion: Jan 1, 2012

Budget: \$872,000

MIZZOU



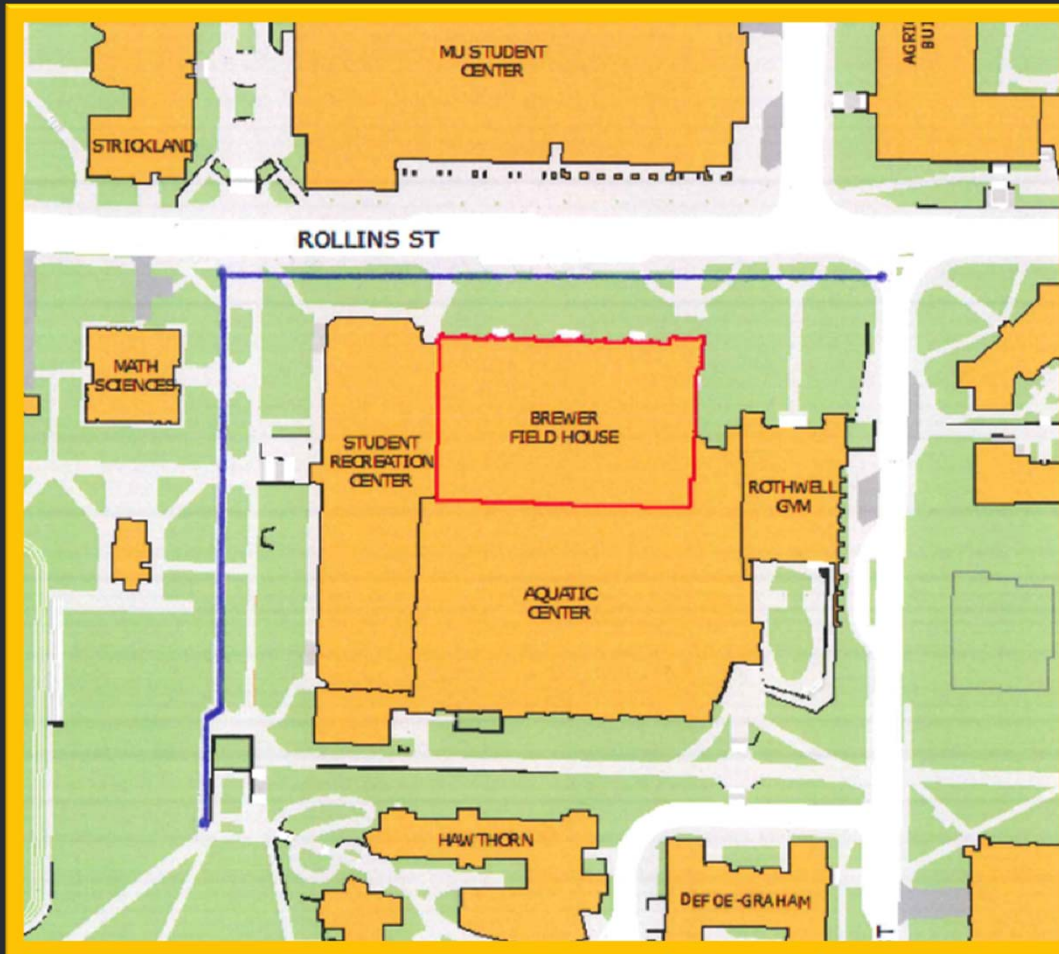
Fire Station – Convert to a Drive-Through Facility

Start: October 15, 2011

Complete: April 2012

Budget: \$1 Million

MIZZOU



Rollins Steam Repair

Start: June 20, 2011

Completion Along Rollins: August 12, 2011

Completion in Math Science Mall: March 31, 2012

Budget: \$5.1 Million

MIZZOU



Project Workload

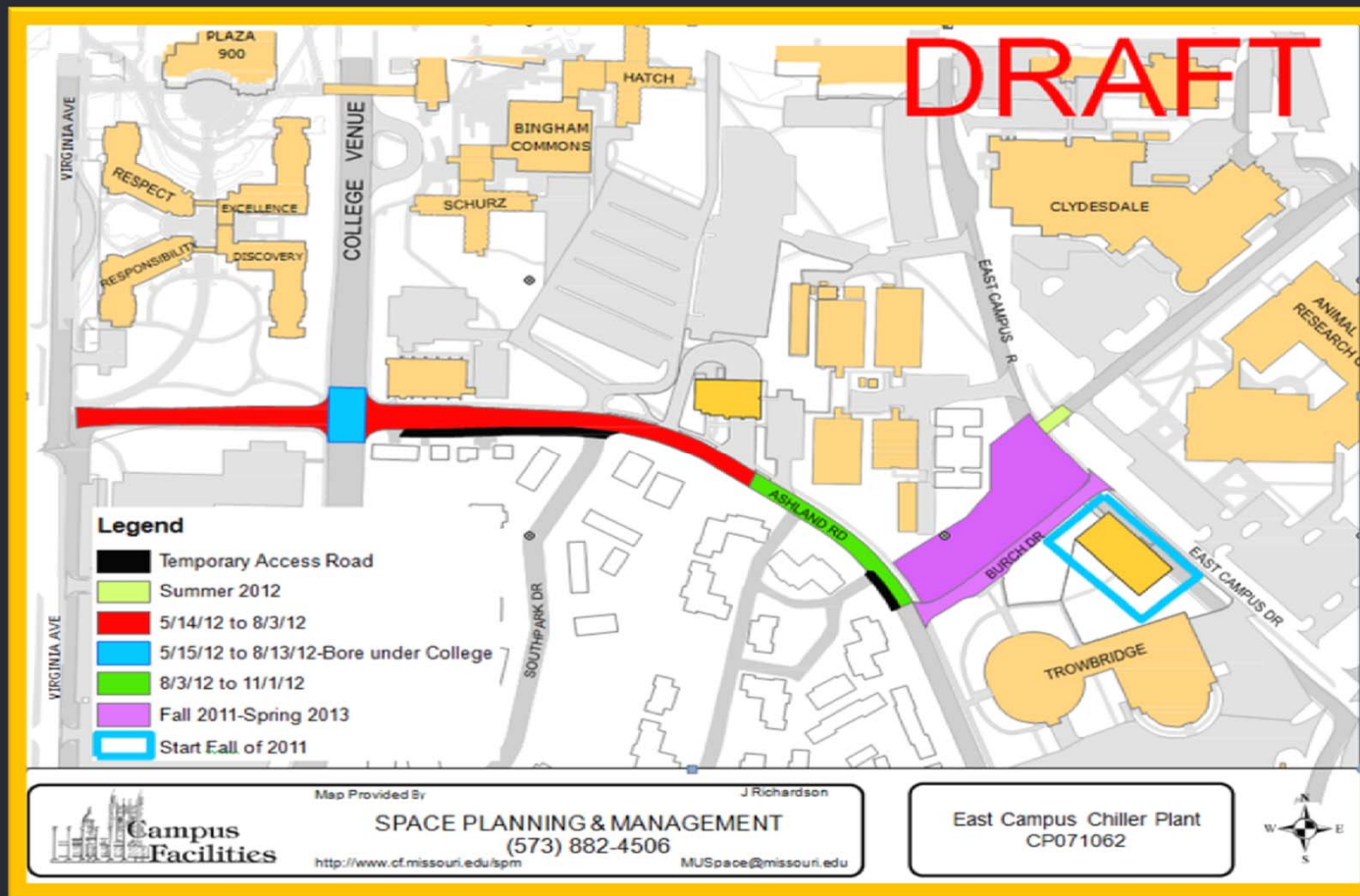
Projects Currently
In Design

MIZZOU



MOI 2nd and 3rd Floor Renovation
Advertisement: October 2011
Budget: \$1.2 million

MIZZOU



Utilities to East Campus Chilled Water Plant

Advertisement: TBD

Start: May 14, 2012

Completion: August 3, 2012

Budget: \$3.5 Million

MIZZOU



Animal Resource Center

Advertisement: October 07, 2011

Start: December 2011

Completion: December 2012

Budget: \$7.1 Million

MIZZOU



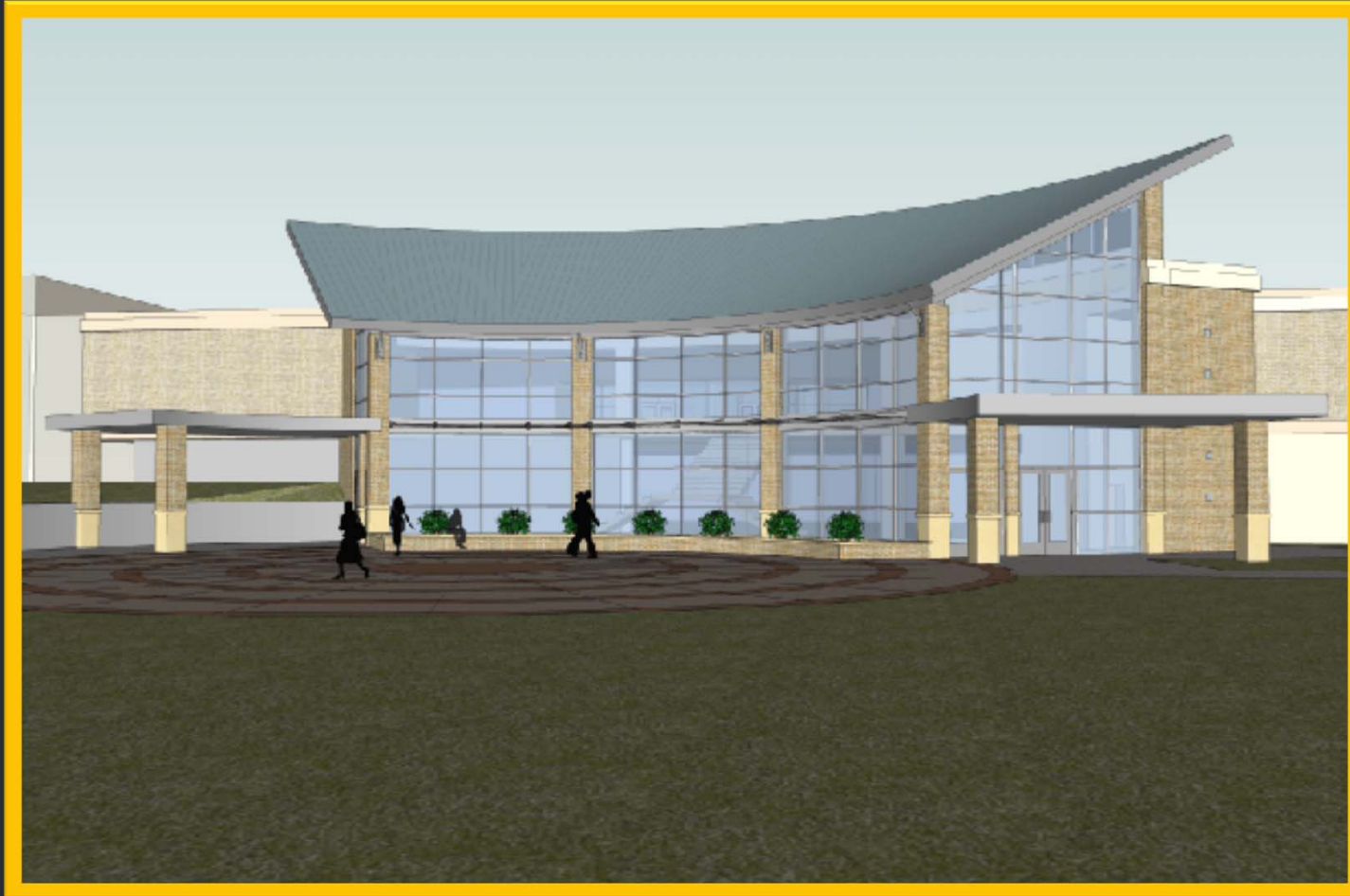
Mark Twain – Renovate Residence & Dining Facilities

Targeted Start Date: January 2012

Targeted Completion Date: June 2013

Budget: \$19.9 Million

MIZZOU



Pershing Hall – Interior & Exterior Renovation

Targeted Start Dates: November 2011

Targeted Completion Dates: November 2012

Budget: \$5.2 Million

MIZZOU



Gwynn Hall – Renovation

Fall 2012 – Winter 2013

Budget: \$10,500,000

MIZZOU



East Campus Chilled Water Plant

Fall 2011– Spring 2013

Budget: \$15 million

MIZZOU



Women's & Children's Hospital - South Pavilion Renovation
Advertisement: November 2011
Budget \$5 Million

MIZZOU



Research Park Chiller Plant
Install 600 ton chiller
Advertisement: October 2011
Budget \$1.2 million

MIZZOU



Johnston/Wolpers Renovation

Start: Winter 2012

Complete: Spring 2015

Budget: \$36,778,075



MIZZOU



Missouri Orthopedics Institute – Facility Expansion Study
* Study complete: Fall 2011

MIZZOU

Campus Facilities

Planning, Design & Construction



Building A Better Mizzou



Campus Facilities
University of Missouri

MIZZOU