

2015
Assessment Committee
Gwen Gray and Caryn Scoville, Chairs

Annual Statistical Report FY 2015



Libraries
University of Missouri

Contents

Introduction	1
Peer Library Comparisons	2
Association of Academic Health Sciences Libraries Comparisons	5
Collections	6
Borrowing and Lending from Other Libraries	8
Expert Assistance	9
Instruction	10
Website	11
MOspace Institutional Repository	11
Equipment	12
Facilities	13
Special Collections, University Archives & Rare Books	14
Social Media	15
Giving	18

Libraries Assessment Committee

Gwen Gray, Co-chair
Caryn Scoville, Co-chair
Ellen Blair
Shannon Cary
Corrie Hutchinson
Judy Maseles
Jeannette Pierce
Rhonda Whithaus

Libraries

Elmer Ellis Library (main library)	Mathematical Sciences Library
Engineering Library and Technology Commons	Missourian Library
A. G. Unklesbay Geological Sciences Library	Zalk Veterinary Medical Library
J. Otto Lottes Health Sciences Library	University Archives
Frank Lee Martin Journalism Library	Law Library

Celebrating MU Libraries

**Ellis Library
Centennial
1915–2015**

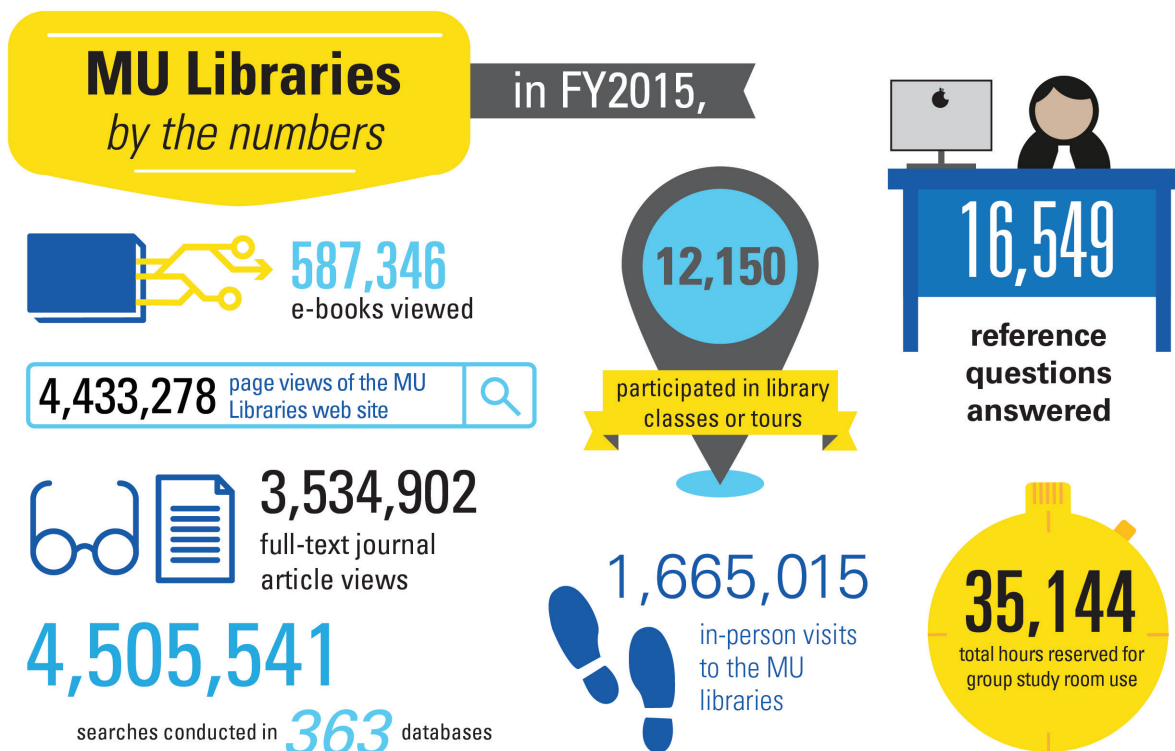
Introduction

To support the need for continual assessment and to provide data useful for strategic planning, the MU Libraries Assessment Committee is pleased to share our third annual statistical report. The report provides peer data on financial support and staffing as well as statistics regarding collections and services offered by the Libraries.

The report provides evidence of the challenges faced by the Libraries. Our budget is significantly lower than our peer institutions. We rank 53rd of 59 among American Association of University (AAU) Libraries in terms of overall budget. Our library expenditures at \$591.21 per FTE student are less than half of the AAU public university average of \$1,284.11.

Lower than average budgets have a cumulative effect on library services and collections, which in turn negatively affect research and education at the University of Missouri. The Libraries are not able to adequately maintain staffing, collections and services given the current budget, let alone provide new and innovative services such as data management and open access publishing.

Despite the challenging budget climate, the Libraries continue to provide services and collections to meet the needs of our users. For instance, the Libraries offer instruction on the use of library resources for a variety of courses, including a large number of introductory English courses. The number of students participating in library instruction sessions has increased 30% in the last five years, and the number of total instruction sessions has gone up 40%. In addition, librarians create online guides for students and faculty, and there has been a 243% increase in the use of these guides over the last five years. The infographic below provides more highlights regarding MU Libraries in FY2015.



Peer Library Comparisons

The University of Missouri Libraries use the public university members of the Association of American Universities (AAU) as our official peer group. In addition, we take a look at data from libraries at SEC institutions who are members of the Association of Research Libraries (ARL). All peer comparison data is drawn from statistics collected annually by ARL. The data can be challenging as some libraries are required to include figures representing all institutional libraries, including medical and law libraries, while other libraries do not include this data due to differences in administrative structure or program offerings. Medical libraries in particular are resource intensive, and we have tried to indicate when figures provided include support for these specialized libraries.

2014 All AAU Libraries Listed by ARL Ranking

Harvard	\$123,135,255	Iowa	\$31,857,525
Yale	\$87,585,510	Pittsburgh	\$31,948,563
Toronto	\$80,821,848	Michigan State	\$32,147,441
Columbia	\$66,432,398	McGill	\$32,313,761
Michigan	\$69,763,323	Florida	\$31,207,901
UC Berkeley	\$62,659,189	Arizona	\$28,766,323
New York	\$59,581,642	Maryland	\$27,745,315
Pennsylvania State	\$54,748,383	Washington U–St. Louis	\$27,021,630
Texas	\$53,887,224	UC San Diego	\$27,861,406
Princeton	\$51,272,361	Purdue	\$26,496,316
Cornell	\$51,743,552	Boston	\$24,659,123
UC Los Angeles	\$52,766,233	Vanderbilt	\$24,493,054
Duke	\$52,107,417	Kansas	\$23,498,542
Ohio State	\$48,621,427	Brown	\$23,472,635
Illinois	\$46,479,470	MIT	\$22,359,507
Southern California	\$45,136,222	Iowa State	\$21,949,798
Pennsylvania	\$45,508,023	Colorado	\$22,088,524
Texas A&M	\$41,942,895	Rochester	\$21,468,232
Washington	\$42,600,723	UC Irvine	\$21,004,369
Johns Hopkins	\$41,247,490	SUNY-Buffalo	\$19,961,652
Minnesota	\$41,353,266	Tulane	\$19,575,670
Emory	\$40,025,183	UC Davis	\$19,704,084
Rutgers	\$40,900,985	Oregon	\$19,368,589
Wisconsin	\$39,363,871	Missouri	\$18,132,491
North Carolina	\$38,020,731	Rice	\$16,388,634
Chicago	\$36,392,289	UC Santa Barbara	\$17,584,577
Indiana	\$34,487,609	Georgia Tech	\$15,071,976
Northwestern	\$34,313,925	Case Western Reserve	\$14,750,002
Virginia	\$34,160,235	SUNY-Stony Brook	\$13,691,211

AAU Public Institutions Ranked by Library Expenditures by Student

AAU Public Institutions	2014 Library Expenditures per FT Student	2014 Collections Expenditures	2014 Professional and Support Staff	2014 Total FT Students	Includes Support for Medical and/or Law Libraries**
California, Berkeley	\$1,821.22	\$22,726,792.00	380	34,405	
Michigan	\$1,695.26	\$25,459,121.00	544	41,152	No Med
Virginia	\$1,620.04	\$12,109,120.00	296	21,086	
North Carolina	\$1,558.87	\$15,557,364.00	294	24,390	
Iowa	\$1,311.28	\$18,603,258.00	194	24,295	No Med
California, Los Angeles	\$1,279.12	\$15,610,465.00	387	41,252	No Med
Texas	\$1,136.48	\$20,922,649.00	374	47,416	No Med
Illinois	\$1,130.39	\$19,212,701.00	335	41,118	No Med
Minnesota	\$1,066.71	\$17,963,662.00	294	38,767	No Law
Pittsburgh	\$1,029.14	\$16,617,295.00	247	31,044	
Wisconsin	\$1,024.35	\$12,797,066.00	359	38,428	
California, San Diego	\$1,016.80	\$9,566,270.00	219	27,401	
Kansas	\$1,003.74	\$10,131,719.00	194	23,411	No Med
Washington	\$936.51	\$16,067,994.00	342	45,489	
California, Santa Barbara	\$921.82	\$5,860,806.00	121	19,076	
Indiana	\$920.48	\$16,027,788.00	289	37,467	
Oregon	\$883.60	\$7,443,692.00	166	21,920	No Med
Ohio State	\$867.62	\$18,977,914.00	313	56,040	
Maryland	\$861.68	\$11,400,148.00	221	32,199	
Colorado	\$841.72	\$11,200,366.00	165	26,242	No Med/Law
SUNY-Buffalo	\$804.48	\$9,065,327.00	134	24,813	No Med
Georgia Tech	\$804.14	\$7,474,554.00	131	18,743	No Med/Law
Arizona	\$787.90	\$14,660,978.00	193	36,510	
Rutgers	\$777.41	\$14,110,365.00	352	52,612	No Med/Law
Texas A&M	\$772.56	\$23,609,080.00	274	54,291	No Med/Law
Purdue	\$759.84	\$13,428,913.00	159	34,871	
California, Irvine	\$752.17	\$9,318,324.00	161	27,925	
Iowa State	\$746.34	\$13,756,647.00	120	29,410	
Penn State	\$744.20	\$20,287,723.00	578	73,567	
Florida	\$734.48	\$12,827,981.00	264	42,490	
Michigan State	\$730.51	\$16,308,972.00	197	44,007	No Med/Law
SUNY-Stony Brook	\$683.09	\$8,401,621.00	76	20,043	No Law
California, Davis	\$601.36	\$8,940,658.00	130	32,766	No Med/Law
Missouri	\$591.21	\$8,660,675.00	156	30,670	
Average	\$1,284.11	\$16,713,652.46	317	33,397	

SEC Libraries with ARL Membership

	Library Expenditures per FT Student	Collections Expenditures	FT Professional & Support Staff	Total FT Students	Includes Support for Medical and/or Law Libraries
Vanderbilt	\$2,047.06	\$11,950,301	175	11,965	
Tennessee	\$1,000.38	\$14,781,177	214	26,283	
Kentucky	\$851.87	\$10,976,643	173	25,658	
South Carolina	\$840.47	\$8,941,910	163	28,655	
Texas A&M	\$772.56	\$23,609,080	274	54,291	No Law
Florida	\$734.48	\$12,827,981	264	42,490	
Georgia	\$707.88	\$12,831,691	243	35,197	No Med
Alabama	\$702.23	\$10,887,008	154	29,036	
Auburn	\$593.48	\$6,594,618	80	21,093	No Law/Med
Missouri	\$591.21	\$8,660,675	156	30,670	
Louisiana State	\$510.83	\$7,208,499	121	27,632	



Association of Academic Health Sciences Libraries (AAHSL) Comparisons*

AAU Peers

This group consists of AAHSL libraries that serve land-grant institutions and are members of AAU and ARL.

	FTE - Professional Staff	Serials Expenditures	Total Collection Expenditures
Iowa	9.8	\$2,650,616	\$3,091,622
Michigan State	5	\$2,161,790	\$2,954,996
Minnesota	11.6	\$1,997,477	\$2,736,874
Texas A&M	15	\$1,785,646	\$2,681,648
Florida	12	\$1,898,121	\$2,226,475
Ohio State	11.5	\$1,409,514	\$2,127,779
Arizona	17.33	\$1,425,916	\$1,713,671
Wisconsin	13	\$1,430,689	\$1,659,426
Missouri	9	\$765,233	\$1,072,069

Selected Peers

This group was chosen for comparable faculty and student populations.

	FTE - Professional Staff	Serials Expenditures	Total Collection Expenditures
University of Texas Medical Branch (Galveston)	7.75	\$998,910	\$2,267,217
Univeristy of Florida	12	\$1,898,121	\$2,226,475
Medical University of South Carolina	12	\$1,520,776	\$2,012,721
Rush (Illinois)	7	\$1,521,384	\$1,920,021
University of Arkansas for Medical Sciences	11	\$1,362,319	\$1,738,032
University of New Mexico	11.1	\$1,216,597	\$1,700,008
University of Utah	15.15	\$1,499,051	\$1,663,390
Georgia Regents University	11	\$1,273,522	\$1,594,778
University of Missouri	9	\$765,233	\$1,072,069

*Data from the Annual Statistics of Medical School Libraries in the United States and Canada.

Collections

Size of Collection

	FY2011	FY2012	FY2013	FY2014	FY2015
Print Volumes		2,462,313	2,597,974	2,923,520	2,982,421
Ebooks		678,596	1,392,493	1,316,416	1,250,292
Total Volumes	3,612,144	3,140,909	3,990,467	4,239,936	4,232,713

Percentage of Budget Spent on Online vs. Print*

	FY2011	FY2012	FY2013	FY2014	FY2015
Online—amount	\$4,602,967.97	\$6,129,369.46	\$5,325,641.11	\$5,271,481.37	\$4,800,569.71
Online—percentage	75.14%	96.27%	83.67%	78.13%	70.58%
Print—amount	\$1,523,294.60	\$237,645.66	\$1,039,737.98	\$1,475,580.49	\$2,000,650.51
Print—percentage	24.86%	3.73%	16.33%	21.87%	29.42%

*Approximate

Percentage of Budget Spent on Continuing Resources vs. One-Time Expenses

	FY2011	FY2012	FY2013	FY2014	FY2015
One-time — amount	\$1,297,148.00	\$1,230,071.00	\$917,174.00	\$977,295.00	\$1,246,512
One-time — percentage	20.02%	18.82%	14.27%	14.75%	20.15%
Continuing—amount	\$5,181,921.00	\$5,306,479.00	\$5,510,324.00	\$5,648,276.00	\$4,939,891
Continuing—percentage	79.98%	81.18%	85.73%	85.25%	79.85%



Collections Cont.

Use of Course Reserves

	FY2011	FY2012	FY2013	FY2014	FY2015
Total Print Reserve	43,216	24,846	16,480	13,015	12,171
Total Electronic Reserve	557,274	390,620	320,396	344,500	177,333
Total Reserve Loan	600,490	415,466	336,876	357,515	189,504

Circulation*

	FY2011	FY2012	FY2013	FY2014	FY2015
Ellis	122,857	115,568	105,336	89,463	85,771
Annex	1,105	673	423	199	80
Archives	1,549	1,237	1,202	1,629	1,546
Engineering	5,250	4,779	3,737	3,672	3,413
Geology	1,503	2,146	1,447	1,329	1,441
Health Sciences	8,595	7,499	5,152	4,597	4,151
Journalism	3,464	3,815	5,826	4,864	2,624
Math	2,771	3,290	2,614	2,383	2,357
Special Collections	5,896	7,995	5,638	6,437	5,648
Veterinary Medical	1,362	1,337	842	901	817
TOTAL CIRCULATION	154,352	148,339	132,217	115,474	107,848

*Does not include renewals.

Use of Electronic Resources

	FY2011	FY2012	FY2013	FY2014	FY2015
Total Resources	298	277	317	317	363
Electronic Resource Searches	3,082,479	2,602,945	3,913,158	3,468,927	3,879,202
Summon† Searches	561,674	590,107	695,822	762,311	626,339
Total Searches	3,644,153	3,193,052	4,608,980	4,231,238	4,505,541
Full-Text Views	2,385,062	2,639,626	2,937,147	2,692,509	3,534,902
E-Book Views	822,309	630,215	613,457	577,062	587,346
Total Views	3,207,371	3,269,841	3,550,604	3,269,571	4,122,248

†Summon provides a single, easy to use search box for discovering information from the University of Missouri Libraries' collections.

Note: Not all vendors provide statistics. Statistics represent the majority of the libraries' online resources.

Borrowing and Lending from Other Libraries

MOBIUS

MOBIUS is a consortium of libraries in Missouri. The consortium's purpose is to share library materials, information and services using accessible, cost-effective methods. The MOBIUS Union Catalog includes more than 25 million items, serving over 1.5 million people in the state of Missouri. A courier service delivers library materials to member libraries once per day, 5 days per week.

	FY2011	FY2012	FY2013	FY2014	FY2015
Total Borrowing	21,336	20,679	19,154	15,991	14,891
Total Lending	31,881	29,642	27,238	22,629	21,406

Interlibrary Loan (ILL)

ILL Services manages material loan and article requests. This includes partnerships with affiliated libraries through RAPIDILL, the Greater Western Library Alliance and other partnerships which ensures efficient and cost effective delivery of materials.

	FY2011	FY2012	FY2013	FY2014	FY2015
Total Borrowing	41,071	40,387	37,631	35,697	39,953
Total Lending	55,506	51,844	52,766	47,178	44,382



Expert Assistance

Reference Transactions

A reference transaction is an information contact that involves the knowledge, use, recommendations, interpretation, or instruction in the use of one or more information sources by a member of the library staff. In addition to reference transactions, the MU Libraries answered over 57,000 other types of questions in FY14.

	FY2011	FY2012	FY2013	FY2014	FY2015*
ELLIS					
Reference	12,199	14,130	17,424	11,611	5,247
Special Collections	1,541	1,547	1,239	1,445	1,074
Circulation	1,280	1,008	674	601	1,052
Reserve	175	81	0	0	0
Interlibrary Loan	2,504	2,214	2,412	1,695	0
Total Ellis Reference	17,699	18,980	21,749	15,352	7,373
BRANCHES					
Archives	795	695	694	787	892
Engineering	1,284	1,771	1,824	1,273	487
Geology	3,235	1,134	1,158	1,197	616
Health Sciences	8,279	8,713	9,283	7,308	5,592
Journalism	904	525	630	1,086	834
Newspaper	1,137	519	417	368	2
Math	151	160	352	122	68
Veterinary Medical	1,563	1,555	1,223	1,245	685
Total Branch Reference	16,593	16,786	15,505	13,678	9,176
Total Reference	35,299	34,485	34,485	35,427	16,549

*In FY15 the MU Libraries revised how reference transactions were counted in order to follow the Association for Research Libraries' definition.

Use of Online Guides Created by Subject Librarians

	FY2011	FY2012	FY2013	FY2014	FY2015
Number of Guides	162	355	567	704	812
Number of Views	119,758	172,598	227,740	281,829	410,725

Instruction

Classes	FY2011	FY2012	FY2013	FY2014	FY2015
Ellis Classes	191	243	283	306	289
Ellis Tours	171	97	76	66	102
Special Collections	74	154	164	143	140
Archives	15	14	15	23	16
Engineering	25	17	9	6	2
Geology	15	139	131	74	63
Health Sciences	94	98	87	66	84
Journalism	53	59	64	45	55
Newspaper	17	3	2	2	0
Veterinary Medical	9	6	11	23	31
Total Classes	660	831	840	754	782

Participation	FY2011	FY2012	FY2013	FY2014	FY2015
Ellis Class	3,623	4,485	5,297	5,416	5,088
Ellis Tours	2,417	2,281	2,251	1,768	1,973
Special Collections	1,089	1,748	1,772	1,803	1,573
Archives	191	63	35	292	89
Engineering	84	116	96	115	69
Geology	25	319	254	150	173
Health Sciences	1,714	1,492	1,590	1,427	1,579
Journalism	1,030	1,269	1,179	1,080	895
Newspaper	340	30	46	47	0
Veterinary Medical	85	170	132	680	711
Total Participants	10,451	12,007	12,666	12,778	12,150

Note: The Math Library does not hold instructional sessions.

Website

Total Website Visits

Visits are similar to gate counts, indicating the number of times a unique visitor begins a session on the website.

	FY2011	FY2012	FY2013	FY2014	FY2015
Visits	2,055,924	2,343,755	2,189,960	1,885,393	1,889,889
Page Views	4,947,729	5,330,830	5,330,830	4,355,692	4,433,278

Website Visits by Device

	FY2014	FY2015
Desktop	1,463,441	1,635,094
Mobile	57,756	137,875
Tablet	36,660	52,650
Total	1,557,857	1,825,619

MOspace Institutional Repository

MOspace serves as the institutional repository for the four University of Missouri campuses. Content includes scholarly articles and research products; theses and dissertations; conference papers, posters and presentation material; student papers; department publications; campus periodicals; blog entries; yearbooks; and videos of lectures presented at campus events.

Date of the establishment of the Institutional Repository: 2009

Current number of documents in the Institutional Repository:

FY2014: 14,863 MU and UM system items

FY2015: 15,823 MU and UM system items

Legacy Digital Library:

FY2014: 13,361 MU items

FY2015: Same – nothing is being added to this repository.

Date of the establishment of the MOspace Digital Library: December 2013

Current number of items in MU Digital Library:

FY2014: 634 MU items

FY2015: 1,210 MU items

FY2015 usage stats:

- 3,661 sessions
- 2,709 users



Equipment

Equipment Circulation Across All MU Libraries

	FY2011	FY2012	FY1013	FY2014	FY2015
Laptops	2,001	9,687	9,912	11,690	7,014
Tablets	206	839	798	1,062	599
Audio/Video	1,268	1,962	4,319	29,079	14,850
Accessories	3,913	7,268	7,239	8,079	7,373

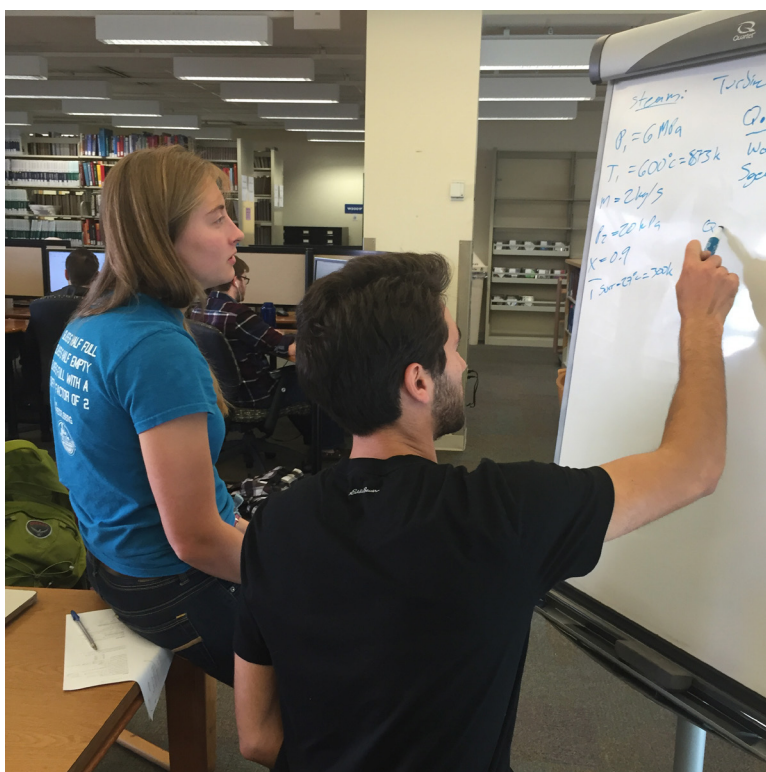
Computers and Tablets Available for Checkout by Library in 2015

	Ellis	Engineering	Health Sciences	Journalism	Math
Laptops	26	10	5	16	0
Tablets	8	4	3	6	2

A complete list of equipment available for checkout is at <http://library.missouri.edu/about/equipment/>.

Public Workstations by Library

Ellis—213
 Engineering —78
 Geology—2
 Health Sciences5–8
 Journalism—17
 Math—2
 Veterinary Medical—10



Facilities

Gate Counts

	FY2011	FY2012	FY2013	FY2014	FY2015
Ellis	1,090,886	901,324	929,845	936,223	1,040,144
Engineering	199,799	227,609	241,158	226,579	230,425
Health Sciences	128,675	118,779	108,389	116,766	130,678
Journalism	255,102	218,699	209,923	230,938	225,022
Veterinary Medical	26,758	30,633	32,447	34,716	38,746
Total	1,701,220	1,497,044	1,521,762	1,545,222	1,665,015

Note: Gate counts are unavailable for the Geology and Math Libraries.

Group Study Room Reservations

Total Reservations	FY2011	FY2012	FY2013	FY2014	FY2015
Ellis (12 rooms)	10,333	11,099	12,318	12,337	12,401
Engineering (9 rooms)	2,071	2,484	4,239	5,912	3,226
Journalism (2 rooms)	2,074	1,874	1,751	1,523	1,827
Health Sciences (4 + 11 Medical Student Only Rooms)*	463	35	38	829	1,900
Total Hours Reserved	FY2011	FY2012	FY2013	FY2014	FY2015
Ellis	19,205	20,892	23,343	38,266	21,987
Engineering	3,806	4,372	7,698	11,945	5,757.5
Journalism	3,652	2,965	2,739	2,546	3,020
Health Sciences	926	70	76	1,920	4,379

*Renovations on Level 1 of the Health Sciences Library resulted in lost access to group study rooms FY11-FY13.

Special Collections, University Archives & Rare Books

Special Collections & Rare Books Usage

	FY2011	FY2012	FY2013	FY2014	FY2015
Microform	3,408	3,972	2,188	2,291	1,354
Books	2,488	4,023	3,450	4,146	4,294
Total	5,896	7,995	5,638	6,437	5,648

Special Collections & Rare Books Instruction

	FY2011	FY2012	FY2013	FY2014	FY2015
Sessions	74	154	164	143	140
Participants	933	2,295	1,404	1,803	1,573

Special Collections & Rare Books Reference

	FY2011	FY2012	FY2013	FY2014	FY2015
Extended	162	208	177	224	206
Reference	1,379	1,344	1,062	1,221	835
Directional	774	525	364	265	313
Total	2,315	2,077	1,585	1,710	1,354

Special Collections & Rare Books Exhibits

	FY2011	FY2012	FY2013	FY2014	FY2015
Exhibits	2	6	6	5	4

Archives General Statistics

	FY2011	FY2012	FY2013	FY2014	FY2015
Requests (Reference)	795	695	694	787	900
Collections Used	1,549	1,242	1,450	1,629	1546
Tours, Classes, Presentations	15	14	15	23	16
Participants	191	63	35	292	89

Archives Requests for Publication*

	FY2011	FY2012	FY2013	FY2014	FY2015
Requests	57	71	43	57	50
Objects Digitized	197	475	133	415	315

*Digital reproductions from textual, photographic, audio and moving image formats

Social Media

Engagement: link clicks, post clicks, like clicks, comments

MU Libraries Facebook Account

	Page Likes	Engagement
July 2014	318	10
August 2014	317	29
September 2014	322	14
October 2014	328	38
November 2014	334	64
December 2014	332	45
January 2015	344	67
February 2015	348	49
March 2015	369	139
April 2015	367	156
May 2015	611	1,154
June 2015	615	215

MU Libraries Twitter Account

	Total Followers
August 2014	1,150
September 2014	1,187
October 2014	1,213
November 2014	1,228
December 2014	1,255
January 2015	1,274
February 2015	1,340
March 2015	1,371
April 2015	1,681
May 2015	1,698
June 2015	1,710

No engagement data was available for the Twitter account during this time.

Special Collections and Rare Books Facebook Account

	Page Likes	Engagement
July 2014	444	277
August 2014	451	334
September 2014	461	328
October 2014	475	392
November 2014	484	252
December 2014	492	286
January 2015	507	400
February 2015	532	421
March 2015	543	400
April 2015	564	455
May 2015	583	291
June 2015	600	416

Special Collections and Rare Books Twitter Account

	Total Followers	Engagement
July 2014	658	173
August 2014	714	588
September 2014	770	773
October 2014	839	1,047
November 2014	894	950
December 2014	945	910
January 2015	1,023	1,331
February 2015	1,099	2,142
March 2015	1,181	3,578
April 2015	1,242	2,033
May 2015	1,323	1,446
June 2015	1,389	827

Special Collections and Rare Books Tumblr Account

	New Followers	Engagement
July 2014	98	1,286
August 2014	5,300	7,313
September 2014	76	1,338
October 2014	110	1,415
November 2014	138	1,792
December 2014	136	1,166
January 2015	224	2,502
February 2015	91	2,349
March 2015	135	2,305
April 2015	180	2,287
May 2015	181	2,076
June 2015	274	2,665

Journalism Facebook Account

	Page Likes	Engagement
July 2014	151	0
August 2014	152	196
September 2014	185	257
October 2014	212	247
November 2014	225	181
December 2014	231	64
January 2015	234	55
February 2015	237	34
March 2015	240	61
April 2015	235	28
May 2015	236	3
June 2015	238	0

Journalism Twitter Account

	Total Followers
September 2014	677
October 2014	677
November 2014	689
December 2014	710
January 2015	714
February 2015	727
March 2015	754
April 2015	766
May 2015	780
June 2015	795

No engagement data was available for the Twitter account during this time.



Giving

We close this report on a positive note and with grateful thanks and acknowledgement of all who have donated to the MU Libraries.

	FY2011	FY2012	FY2013	FY2014	FY2015
Donations*	\$137,694.00	\$277,413.00	\$382,372.00	\$745,138.00	\$4,980,067.00
5-Year Moving Average	\$946,197.40	\$453,967.40	\$290,271.80	\$402,819.00	\$1,304,536.80

	FY2011	FY2012	FY2013	FY2014	FY2015
Expenditures	\$186,234.00	\$153,279.00	\$166,767.00	\$239,478.00	\$331,091.00
Endowment Balances	\$9,074,065.00	\$8,582,278.00	\$9,385,018.00	\$10,540,914.00	\$10,264,247.00

*Totals include all fundraising productivity, including cash, bequests, estate pledges, grants and contracts. Previous reports have not included grants and contracts.

